
Configuring Your Firewall for Client Access in Professional Edition

In a network environment, in order for the clients to communicate with the server, you will need to configure your firewall to allow SQL Server 2005 and the SQL Server Browser service to communicate through the firewall. If the firewall is not configured to allow Database Oasis to communicate with the database, clients will receive a message that they cannot access the database.

Note



In some cases, a firewall will block Database Oasis from accessing the SQL database, even if you are not working with clients. When Database Oasis needs to read or write to the database, it sends a message through the SQL server. Although this message is confined to your computer and not going out over the Internet, some firewalls still block this communication. This can apply when using Professional Edition on the server, or Basic Edition.

SQL Server 2005 uses an instance ID as part of the path when you install its program files. In order to allow access to SQL Server, you must identify the correct instance ID.

Note



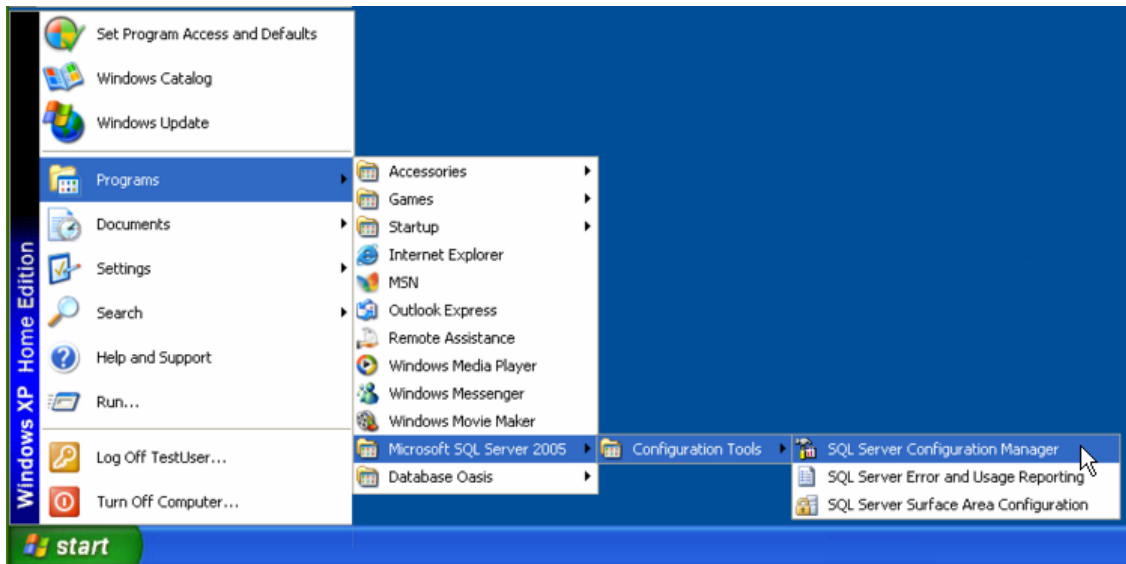
For more information, refer to the Microsoft knowledgebase article found at:

<http://support.microsoft.com/default.aspx?scid=kb;EN-US;914277>

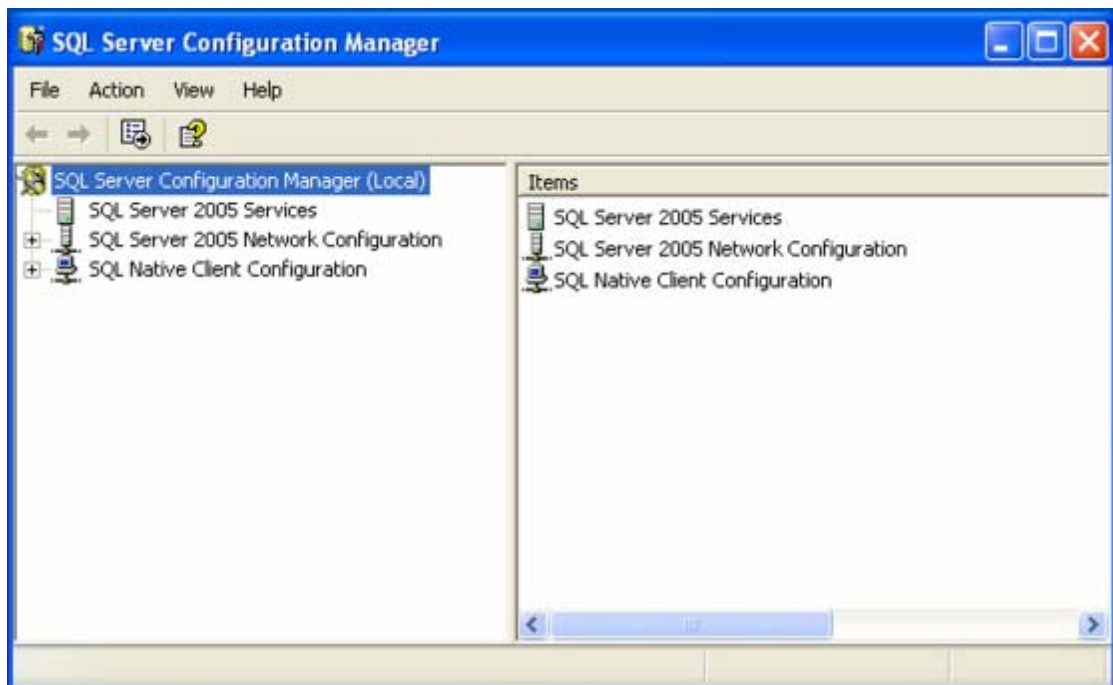
GETTING THE SQL SERVER INSTANCE ID

- 1 On your Windows Taskbar, click Start.

- 2 Select Programs from the Start menu and locate the Microsoft SQL Server 2005 option. Select the Configuration Tools sub-menu, then click SQL Server Configuration Manager:



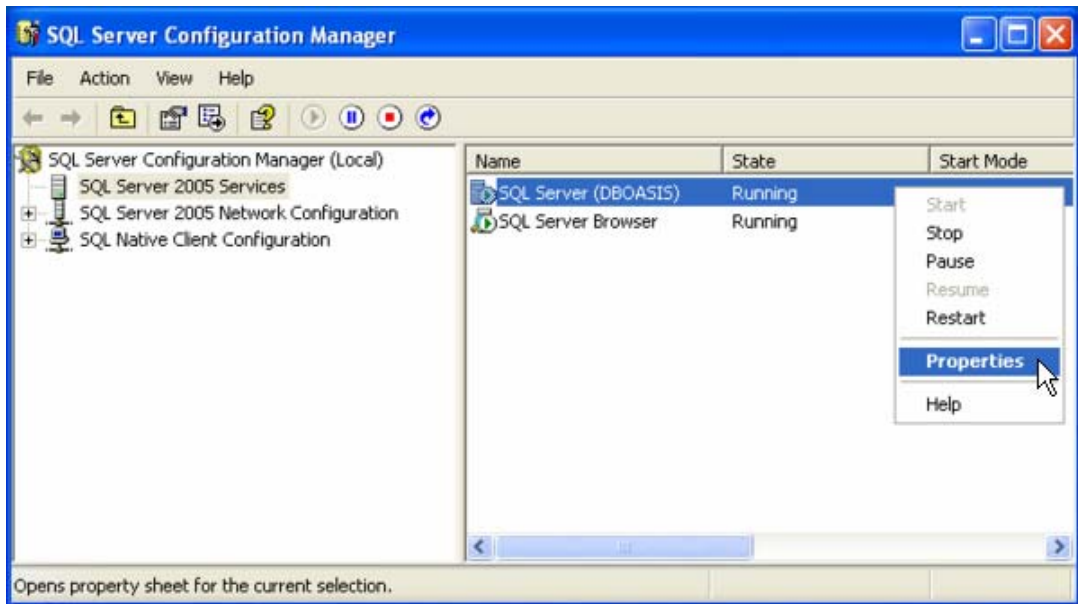
- 3 The Configuration Manager will open:



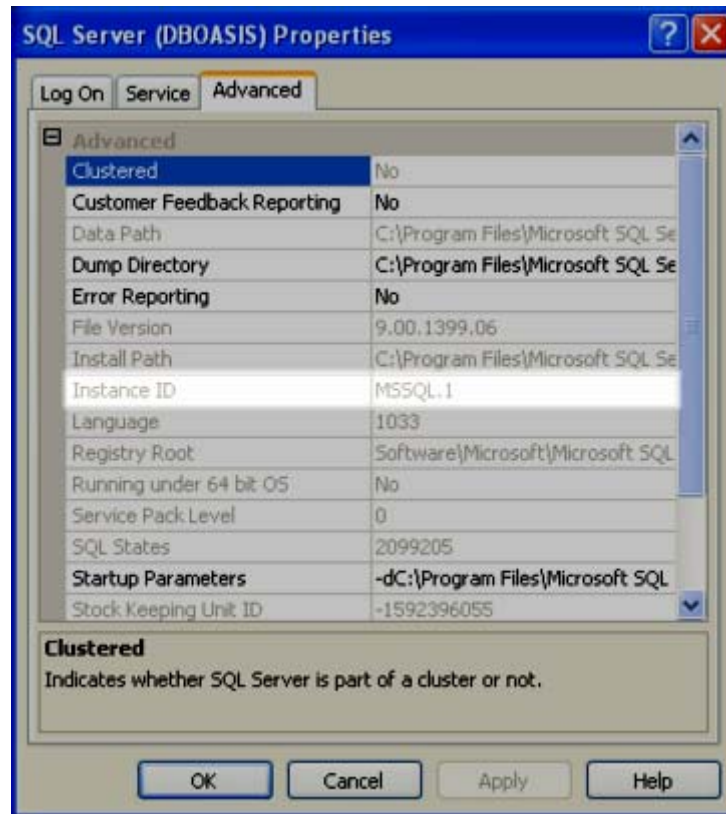
- 4 Click on the SQL Server 2005 Services option in the left hand pane:



- 5 Locate the SQL Server (DPOASIS) option in the right-hand pane and right click. A menu will open. Select Properties:



- 6 The Properties screen will open. Click the Advanced tab.



- 7 Make a note of the Instance ID in the property list. In the above example, the Instance ID is MSSQL.1.
- 8 Click OK. You will be returned to the Configuration Manager screen.

Once you have located the SQL Server ID, you are ready to configure your firewall to allow access to SQL. When configuring your firewall, you will need to specify the executable to allow. The executable file for the SQL instance will be located in the path: “C:\Program Files\Microsoft SQL Server\MSSQL.X\MSSQL\Binn\sqlservr.exe”, where *MSSQL.X* is the instance ID that was located above. Using the above example, the path would be “C:\Program Files\Microsoft SQL Server\MSSQL.1\MSSQL\Binn\sqlservr.exe”. You will also need to specify the executable for the SQL Server Browser service. This is located in the path “C:\Program Files\Microsoft SQL Server\90\Shared\sqlbrowser.exe”.

Refer to the documentation that accompanied your firewall software for instructions on how to create exceptions to allow access to a specific software application. If you are using Windows’ built-in firewall, use the instructions below.

Hint



Even if you are not using Windows Firewall, consider reading these instructions as an example for configuring a firewall.

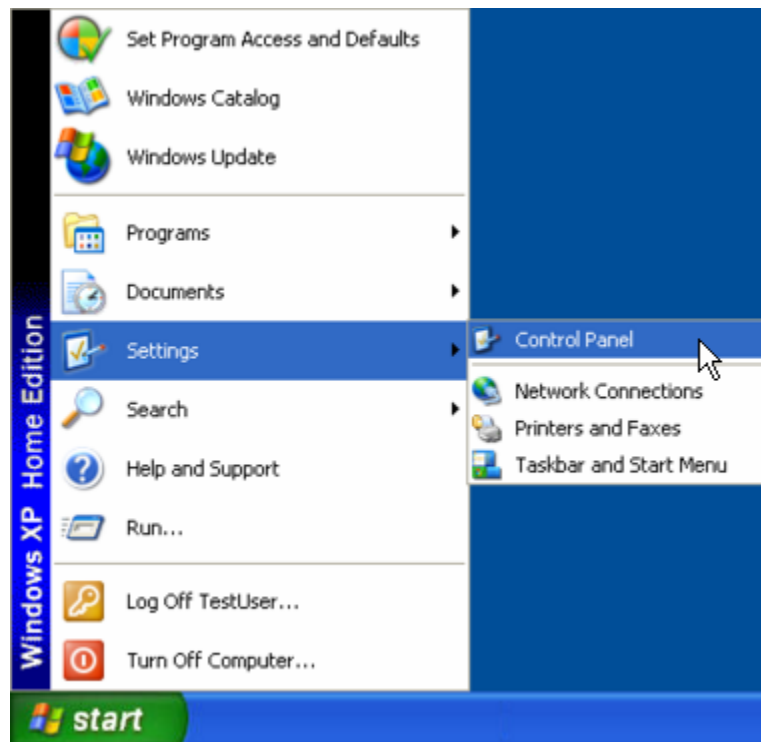
CREATING AN EXCEPTION IN WINDOWS FIREWALL

Note



These steps apply to the version of Windows Firewall that is included in Windows XP Service Pack 2 (SP2) and in Windows Server 2003. If you are using a different firewall system, see your firewall documentation for more information.

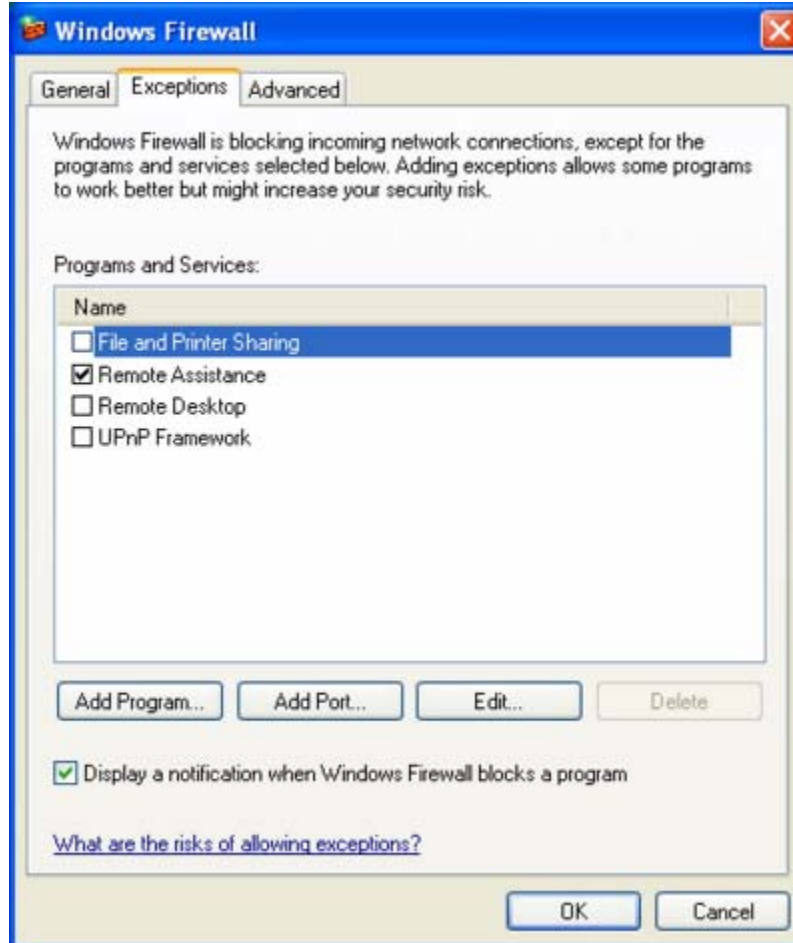
- 1 On your Windows Taskbar, click Start.
- 2 Select Setting, Control Panel from the menu:



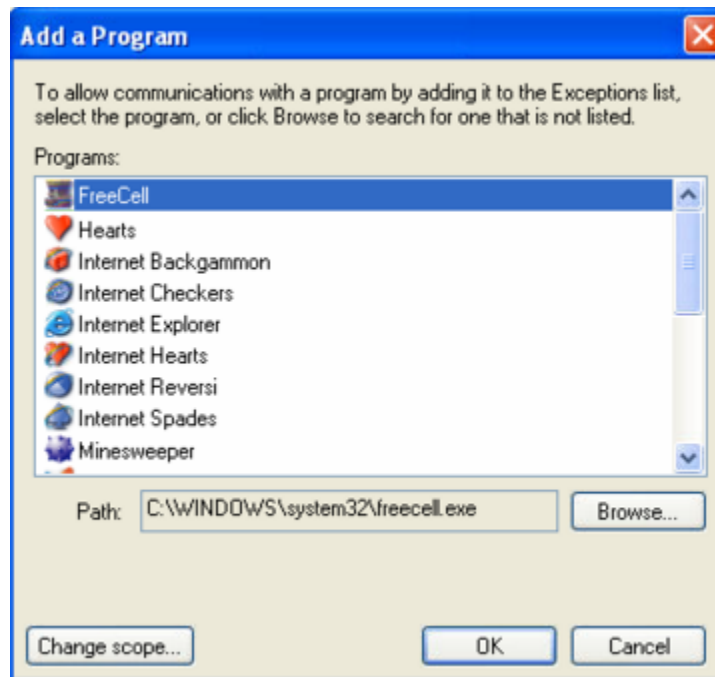
- 3 The Control Panel will open with a selection of icons. Select the Windows Firewall icon:



- 4 Windows Firewall will open. Select the Advanced Tab:



- 5 Click Add Program. The Add a Program screen will open:



- 6 Click Browse. A Windows Open dialog will open.
- 7 Navigate to the path “C:\Program Files\Microsoft SQL Server\MSSQL.X\MSSQL\Binn\sqlservr.exe”, where *MSSQL.X* is the instance ID that was located using the instructions under *Getting the SQL Server Instance ID* above.

Hint



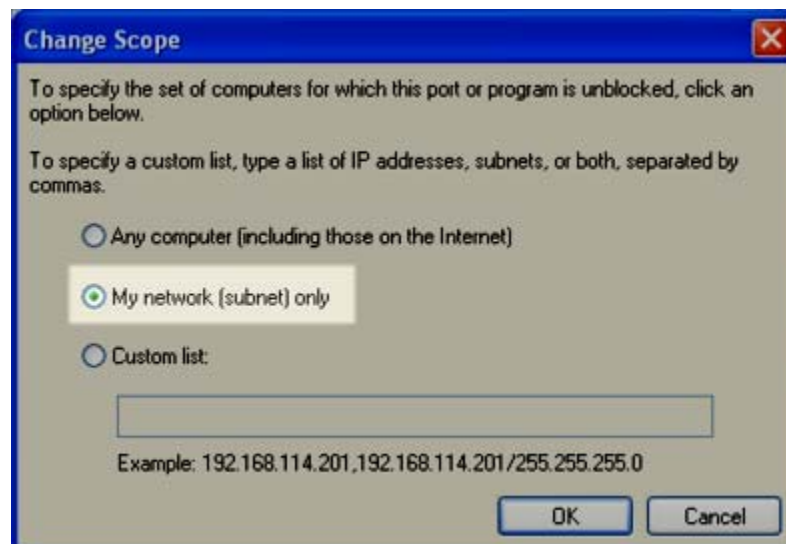
If you don't have any other SQL Server instances installed, the ID will be MSSQL.1.

- 8 Select the sqlservr.exe file and click OK.

- 9 You will be returned to the Add a Program screen. Highlight the sqlservr.exe item in the list and click the Change Scope button:



- 10 The Change Scope screen will open.
- 11 Select the My network (subnet) only radio button:



WARNING



It is very important that you select this option to prevent computers outside of your network from accessing your database over the Internet.

- 12 Click OK to return to the Add a Program screen.
- 13 Click Browse a second time. A Windows Open dialog will open.
- 14 Navigate to the path “C:\Program Files\Microsoft SQL Server\90\Shared\sqlbrowser.exe” and click OK.
- 15 Repeat steps 9 through 12 to change the scope, selecting the file sqlbrowser.exe in step 9.
- 16 Click OK at the Add a Program screen, and OK again at the Windows Firewall screen.