

INSTALLATION INSTRUCTIONS

Table of Contents

Installation Instructions	1
Table of Contents	1
System Requirements	2
Installation	3
Selecting where to Install the Professional Server	3
Running the Installation	4
Upgrade Instructions	10
Running the Upgrade	11
Installing Professional Edition Clients	12
Configuration for Professional Client Access	13

System Requirements

Before installing Database Oasis, you should verify that your computer meets the recommended system requirements.

Operating System

Database Oasis is compatible with Windows operating systems including Windows 2000 and later. You must have the latest service packs available from Microsoft® installed on your computer.

RAM

You will need a minimum of 256MB of RAM to operate Database Oasis. It is recommended that you have 512MB of RAM.

Screen Resolution

Your screen resolution must be set to at least 800x600. Setting your resolution to 1024x768 or greater is recommended.

Hard Drive Space

The Database Oasis application will initially require 30 MB to install. You will need additional hard drive space as you use the software and add data. You are able to store up to 4TB (Terabytes) of data in Database Oasis.

Installation

There are three different types of Database Oasis installations:

- Basic Edition is a single-user product that is installed and used on one computer.
- Professional Edition is a multi-user product. The database is installed on one computer on the network, then accessed by other computers over the network. This primary installation is called the server.
- Professional Edition clients are installed at each machine that needs to use Database Oasis. They are exactly like the server, except that the database isn't installed locally. Instead, they access the database located on the server.

If you will be using Database Oasis - Basic Edition, you will simply need to install the software on the computer you will be using to work with your data.

If you will be using Database Oasis - Professional Edition, you will need to select where you want to install the server.

Selecting where to Install the Professional Server

PRO This feature is only applicable to Database Oasis Professional Edition.

If you will be using Database Oasis - Professional Edition, chances are you will need to access the software from more than one computer. In this case, you need to decide which computer will host the data. When choosing where to install the data server, keep the following points in mind:

- The computer where the data resides will need to be accessible on your network to all of the computers that will be using Database Oasis.
- The computer where the data resides will need to be turned on and logged into Windows when other people want to use the software.

Once you've decided where to install the server, you can perform the client installation on any other computers that will need to access Database Oasis.

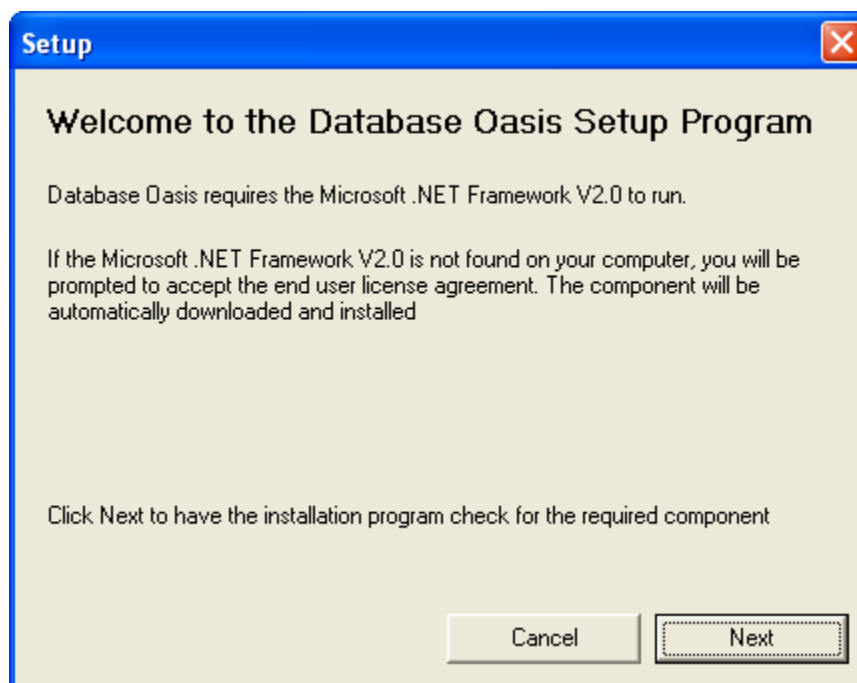
Running the Installation

There are two installation programs.

- DBOasisSetup.exe** This installation file is used to install Database Oasis - Basic Edition, and the Server installation of Database Oasis - Professional Edition. This file installs Database Oasis and the database files.
- DBOClientSetup.exe** This installation file is used to install Client installations of Database Oasis - Professional Edition. This installation file just installs Database Oasis and not the database. This is used for Professional Clients that will access the database installed on the Professional Server.

RUNNING THE BASIC EDITION AND PROFESSIONAL SERVER INSTALL

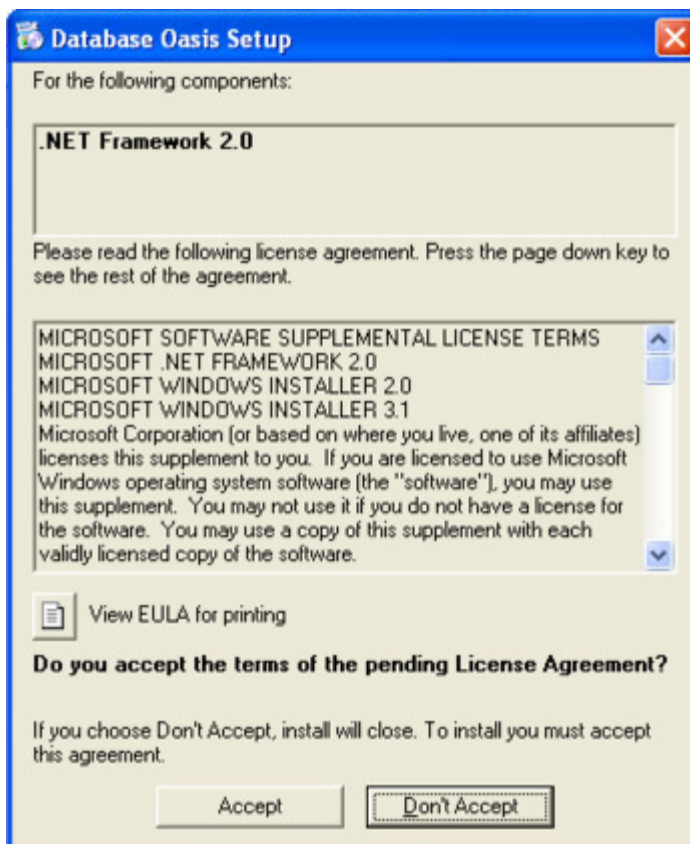
- 1 If you have not already done so, download the Database Oasis installation using the download link on the www.databaseoasis.com website.
- 2 Launch the DBOasisSetup.exe file that you downloaded. The installation files will be extracted and the Setup wizard will launch to guide you through the installation:



- 3 This screen checks your computer to see if components necessary to run Database Oasis are already installed. Database Oasis incorporates the latest Microsoft® Technologies. Depending on whether any of the applications you currently have installed on your computer make use of these technologies, the install program may need to download and install version 2 of the Microsoft .Net Framework from Microsoft. This framework will be used with Database Oasis and any future software applications you install that take advantage of these new technologies. If the latest

framework already exists on your computer, this step will be skipped and you can move directly to step 7 of these instructions.

- 4 Click [Next](#) to begin the scan for required components. If the .NET Framework V2.0 is not found, you will be asked to accept the license agreement prior to download and installation:

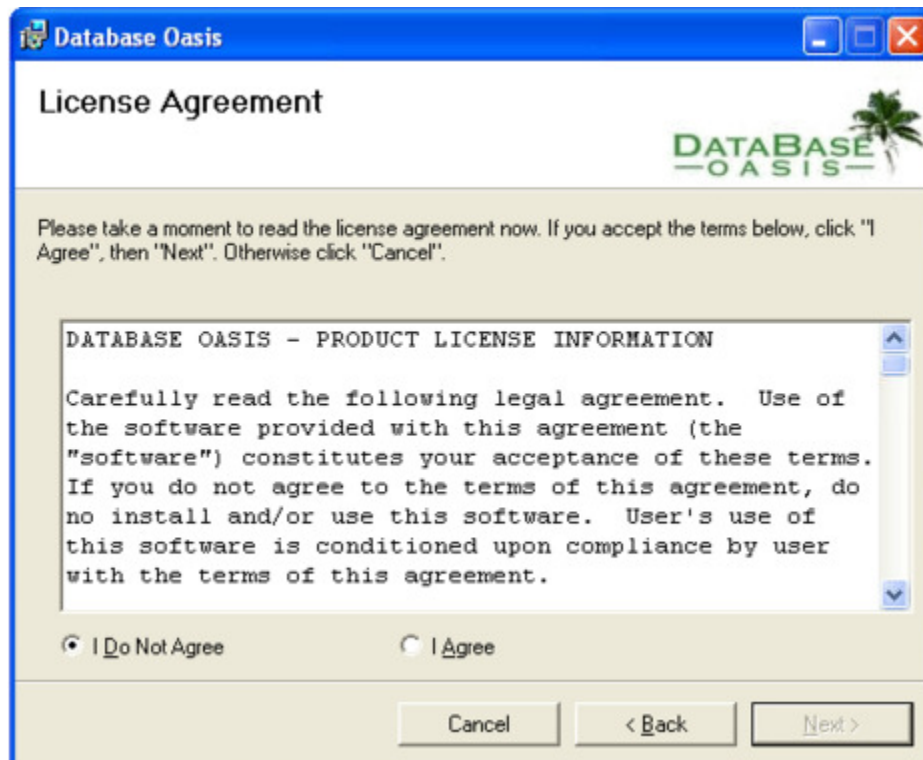


- 5 Read the terms of the agreement and click [Accept](#) to continue with the installation. If the .NET framework needs to be installed, it will be downloaded from Microsoft's website.
- 6 Once the download is complete, a status bar will appear as the files are installed.

- 7 Once the framework is installed, the Database Oasis installation will begin and the following screen will appear:



- 8 Click **Next >** to continue. The license agreement screen will open:

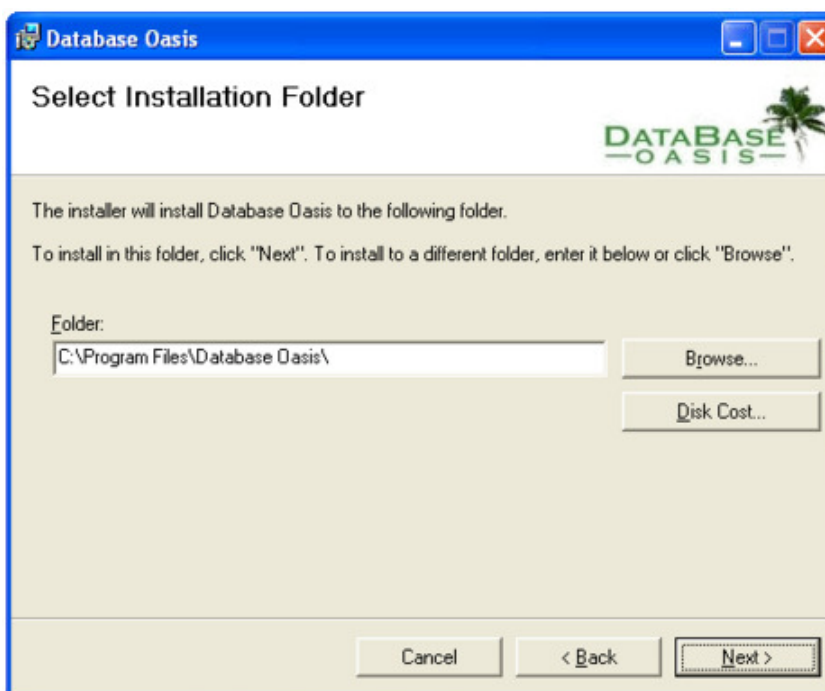


Note



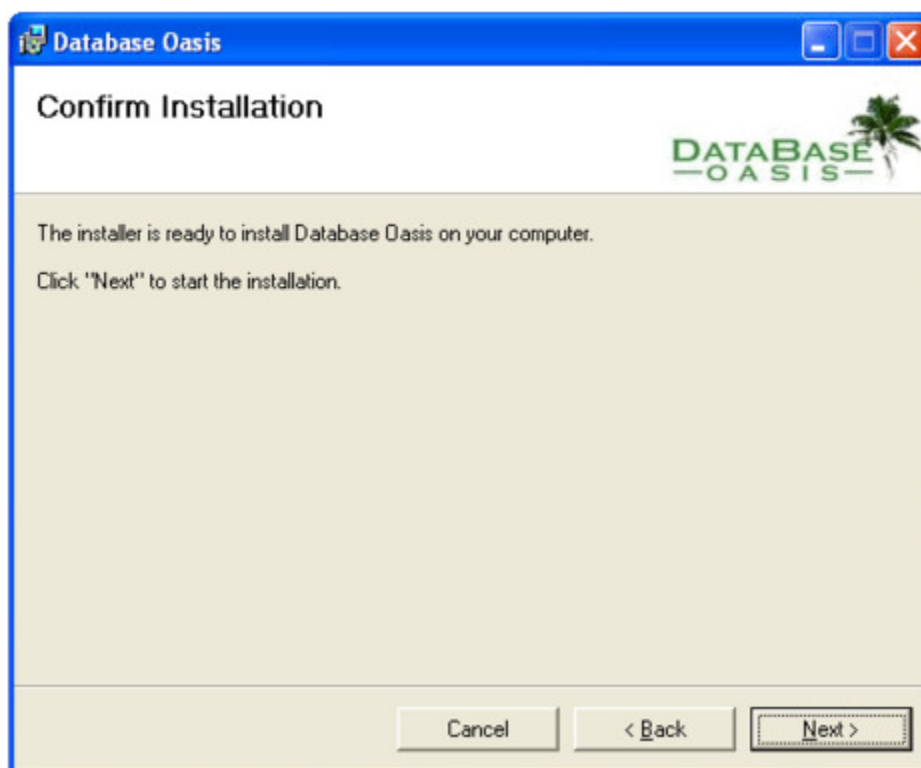
If a Program Maintenance screen appears instead of the License Agreement screen, you already have this version of the software installed.

- 9 Please read the license information carefully. If you do not accept the terms of this agreement, click **Cancel** to abort the installation. If you do accept the terms of the agreement, select the **I Agree** radio button and click **Next >** to continue.
- 10 The following page will open:

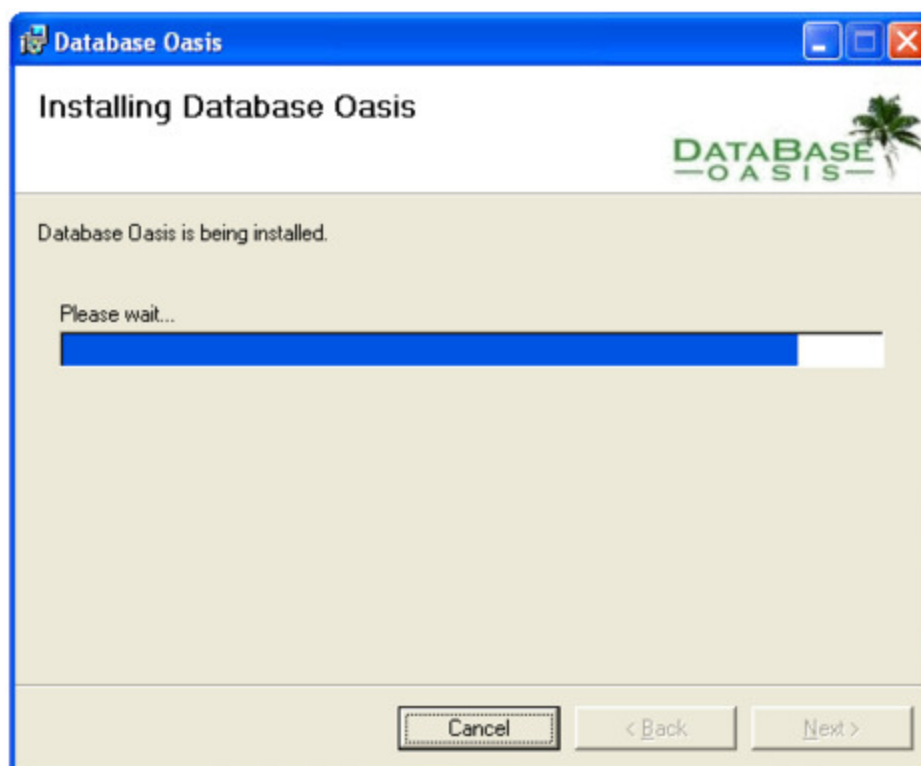


- 11 This allows you to specify a location for your installation of Database Oasis. It is recommended that you install to the default location in the \Program Files folder. If you wish to install to a different location, click the **Browse...** button and select the target folder.

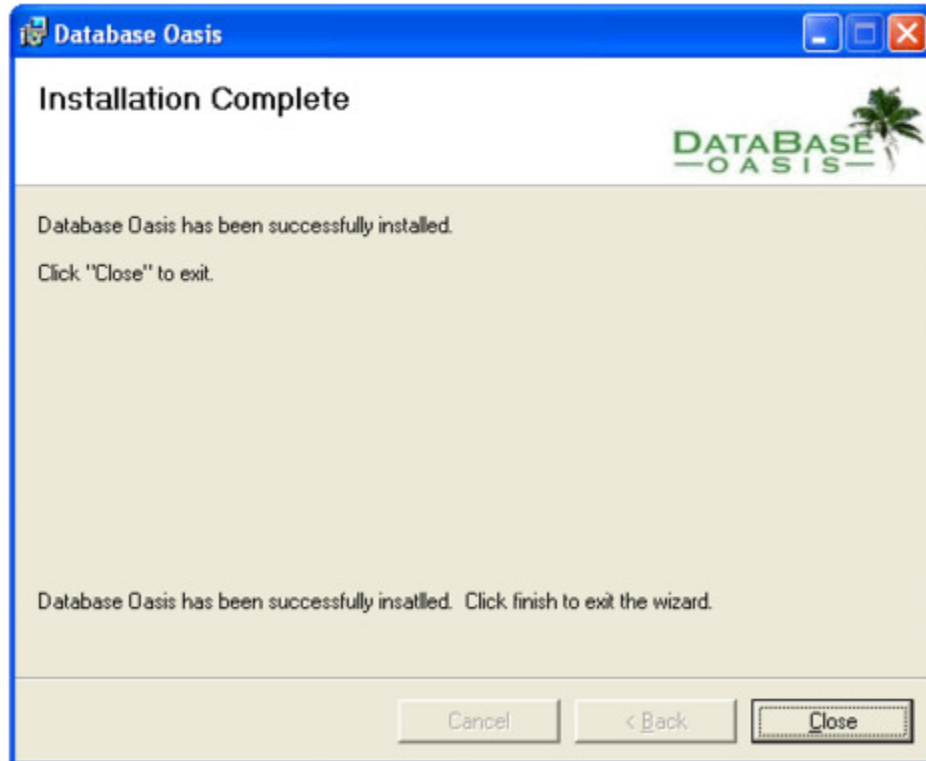
- 12 Click **Next >** to continue. The Confirm Installation screen will open:



- 13 Click **Next >** to begin installing Database Oasis. A progress screen will appear as the software is installed:



14 Once the installation process is complete, the following screen will appear:



15 Click [Close](#) to exit the wizard.

Upgrade Instructions

Prior to upgrading, please review the following:

- Before running an upgrade, make sure to back up your existing installation using the [Backup](#) option on the [Tools](#) menu.
- If you are upgrading from version 2.7 or earlier, the data was stored in a Microsoft SQL Server Express database. When migrating from SQL:
 - Make sure that SQL server is running (you are able to work with data in Database Oasis).
 - Although access to the SQL server is happening locally on your computer and not going out over the Internet, some firewall software may try to block it. If you receive a message that Database Oasis is trying to access the Internet, select to allow the access. If the access gets blocked, Database Oasis will not be able to connect with the existing SQL database.
- If you are upgrading Database Oasis - Professional Edition:
 - Make sure all clients are logged off before proceeding.
 - Make sure all clients are upgraded prior to trying to connect to the server. You will not be able to log on from a client that has not been upgraded.

Note



If you upgrade a client before upgrading the server, the database will be automatically upgraded when you first log on from the client. At that point, you will not be able to log on from the server until it has also been upgraded.

- If you are upgrading from a version of Database Oasis prior to version 2.6
 - There is no direct upgrade path from version 2.5 and earlier to version 2.9. You must first upgrade to version 2.7, then run the latest upgrade. The 2.7 installation can be downloaded from our website at: <http://www.databaseoasis.com/dboasissetup27.exe>
 - A change was made to the way logos are stored starting in version 2.6. Prior to this version, a link was created to the graphic file on your hard drive or network. After v2.6, a change was made to store a copy of the graphic in the database, allowing users to distribute templates without having to distribute separate graphic files. Users upgrading from version 2.5 or earlier will need to open any displays with logos in the

designer. A conversion process will be run to embed the graphic. (There is no need to open each logo separately; the conversion runs as soon as the designer is opened.)

Running the Upgrade

If you have an older version of Database Oasis and would like to upgrade to a newer version, simply run the install as you would for a new installation.

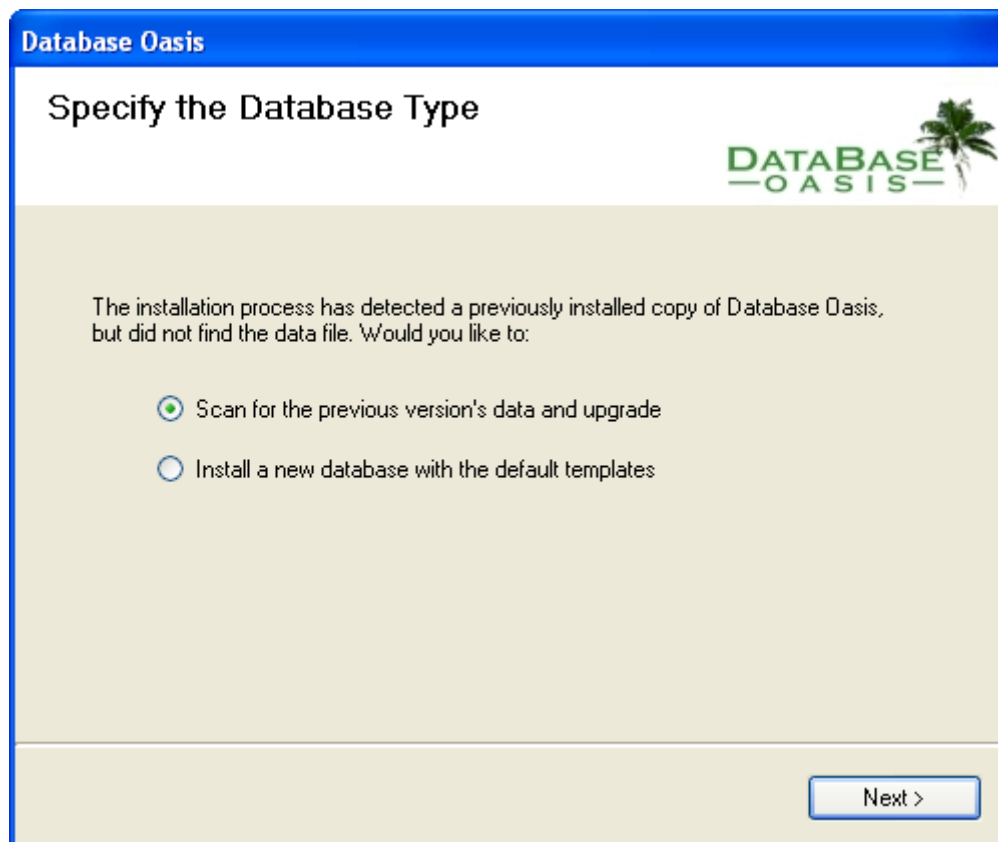
If you are running Professional Edition, you may download the client upgrade at: <http://www.databaseoasis.com/dboasisclientinstall.exe>

When upgrading a Professional Edition Client, launch the dboasisclientinstall.exe file and use the installation wizard to guide you through the install process.

If you have not already done so, you may download the Basic Edition and Professional Edition server upgrade at: <http://databaseoasis.com/DBOasisSetup.exe>

When upgrading a Basic Edition or a Professional Edition Server, launch the DBOasisSetup.exe file and use the installation wizard to guide you through the installation process. Once the initial files have been installed, the install program will search for previous version data. If it is found, it will be upgraded.

If the installation program is unable to locate the data, the Specify the Database Type page will open, allowing you to select whether you would like to scan again for the data, or create new data files without upgrading.



This page most commonly appears when you are upgrading from version 2.7 and your data is in a Microsoft SQL Express database. An additional scan is required to search your network for the

existence of Microsoft SQL server. If found, it will access SQL to determine if there is an instance of Database Oasis that contains data which needs to be upgraded and migrate the data.

To attempt again to upgrade, select the [Scan for the previous version's data and upgrade](#) radio button and click [Next](#). If the data is found, the upgrade procedure will migrate your data from Microsoft SQL Server to the VistaDB database.

If the scan is still unable to locate the data, or a connection cannot be made, you will receive a message giving you the option to try the scan again, install a new database, or cancel.

- If you would like to try to scan again, try correcting the connection issue and select [Yes](#) at the message to scan again. If it is successful the data will be migrated.
- If you would like to bypass the upgrade and install a new database, select [No](#) at the message. ***Existing data will not be upgraded.***
- If you would like to stop the upgrade process and get additional help on locating or connecting to your data select [Cancel](#) and contact Support@DatabaseOasis.com for assistance with converting your data. You can simply run the installation again later to complete the upgrade process.

Installing Professional Edition Clients

PRO This feature is only applicable to Database Oasis Professional Edition.

If you are using Database Oasis Professional Edition, you should install the software on any client machines that will need to access Database Oasis.

RUNNING THE PROFESSIONAL CLIENT INSTALL

- 1 If you have not already done so, download the Database Oasis client installation from <http://www.databaseoasis.com/dboasisclientinstall.exe>.
- 2 Launch the DBOasisClientInstall.exe file that you downloaded. The installation files will be extracted and the Setup wizard will launch to guide you through the installation.
- 3 Follow the installation steps using the guidelines under *Running the Basic Edition and Professional Server Install*, above.
- 4 Click [Close](#) to exit the wizard. (See *Clients & Users in Professional Edition* in your Database Oasis user manual for help with client configuration.)

Configuration for Professional Client Access

In a network environment, in order for the clients to access the data over the network, you will need to set up a network share to the data file.

CREATING A NETWORK SHARE

Note



There may be slight differences in the procedure for sharing data, depending on your operating system and security settings. These steps provide an overview of common configuration options, but do not cover all possible variables.

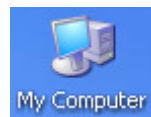
For comprehensive help with configuring a share in Windows XP, refer to the article <http://support.microsoft.com/kb/304040>.

For help in Windows 2000, refer to the article <http://support.microsoft.com/kb/301195>.

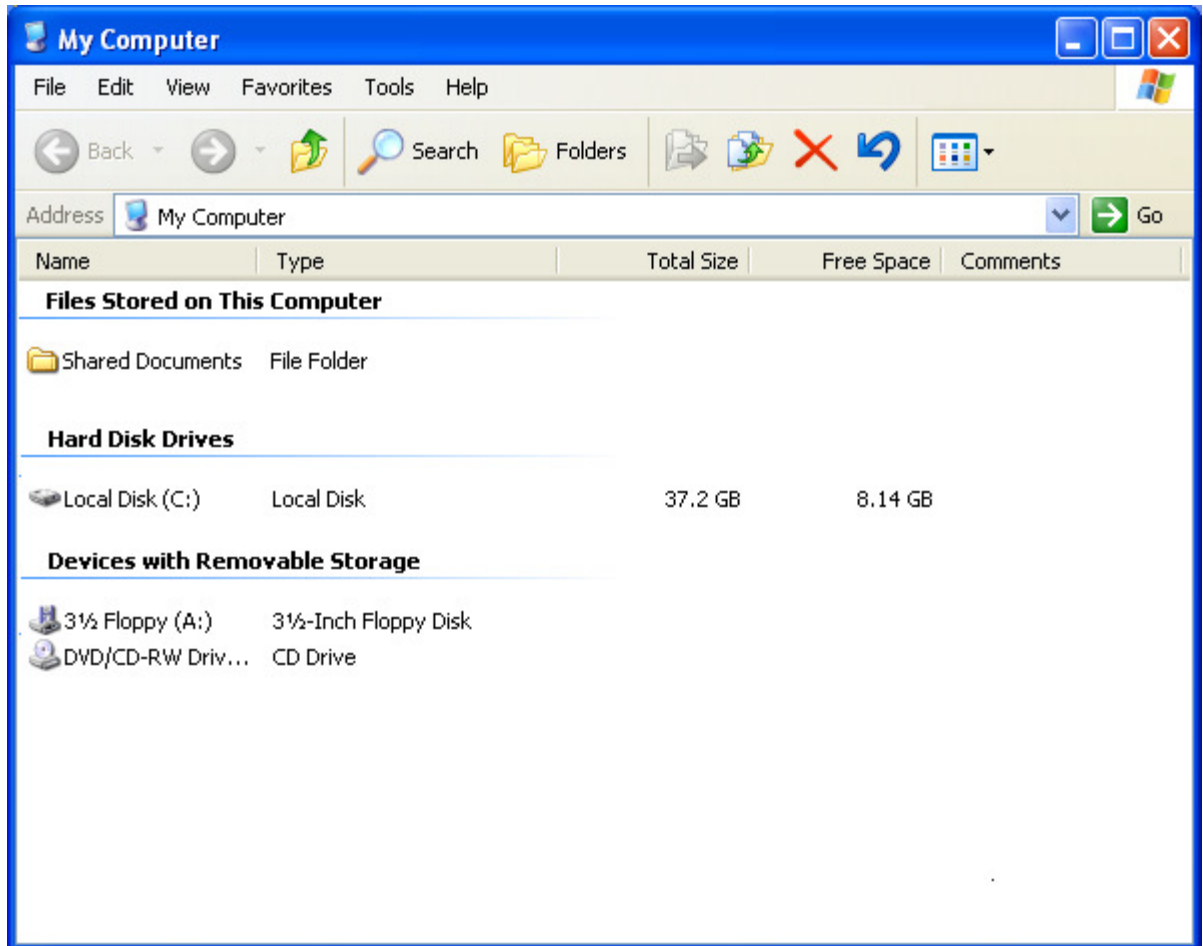
For help in Windows Vista, refer to the article http://www.microsoft.com/technet/network/evaluate/vista_fp.aspx.

For help in Windows 7, refer to the article <http://windows.microsoft.com/en-us/windows7/Share-files-with-someone>.

- 1 On the computer where Professional Edition is installed, double click on the My Computer icon on your desktop:



- 2 The My Computer screen will open:



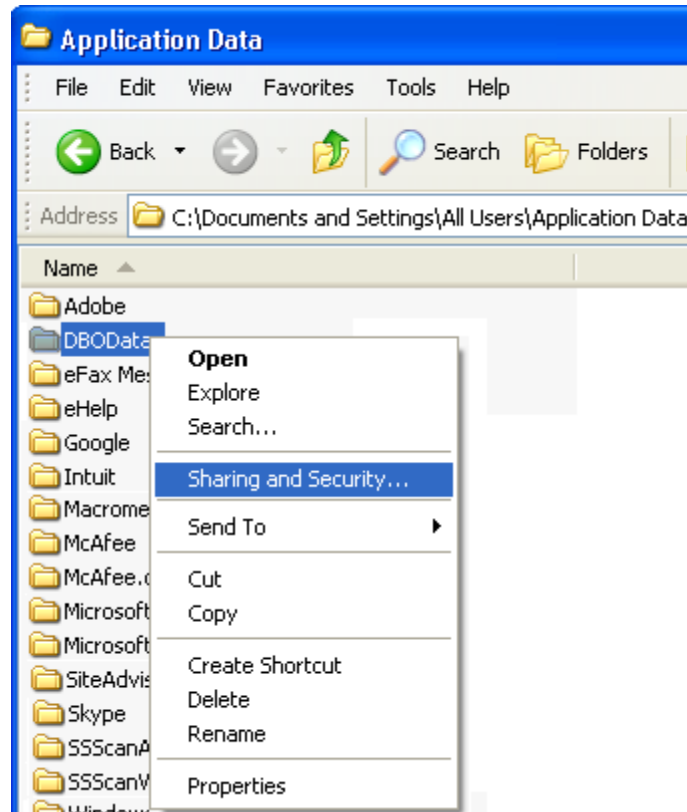
- 3 Navigate to the Database Oasis data path. For operating systems prior to Windows Vista, the data is located in the path C:\Documents and Settings\All Users\Application Data\DBOData. In Windows Vista and Windows 7, the data is located in the path C:\ProgramData\DBOData\.

Note

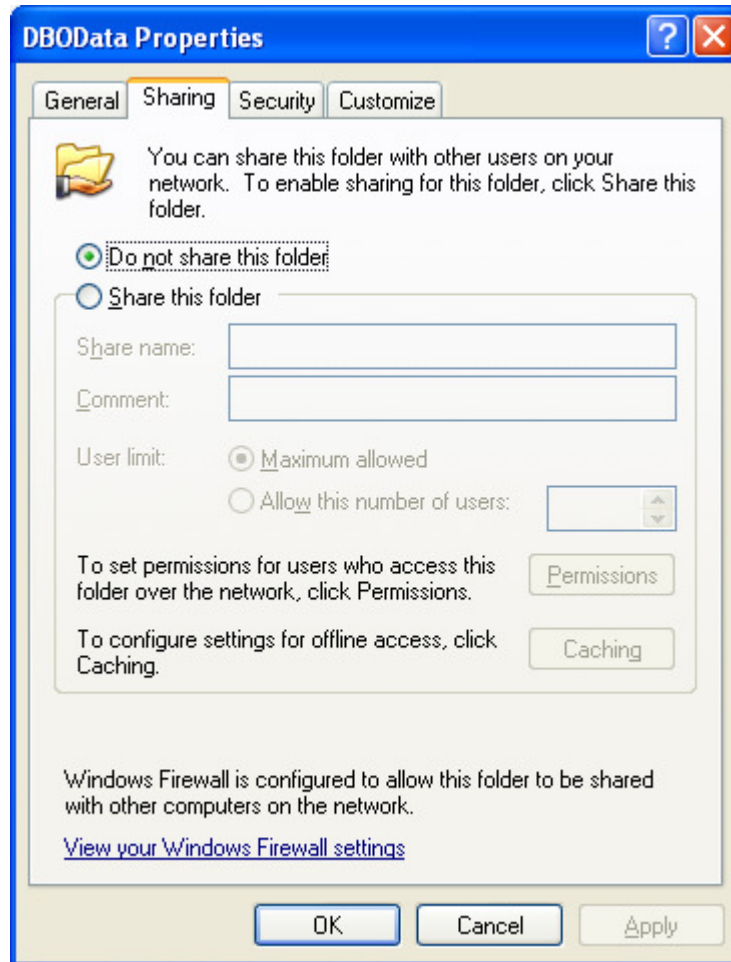


If you do not see the \DBOData folder, it is usually because it is hidden in Windows. To unhide the folder, right click on your Windows Start button and select [Explore](#) from the menu to open Windows File Explorer. Select [Folder Options](#) from the [Tools](#) menu, then select the [View](#) tab. Make sure that the [Show hidden files and folders](#) option is selected.

- 4 Right click on the \DBOData folder and select [Sharing and Security](#) or [Share](#) (depending on your version of Windows) from the right-click menu:



- 5 The **Sharing** tab of the Properties screen for the \DBOData folder will open:



Note



Depending on your version of Windows, you may need to press the **Advanced Sharing** button on the Properties screen to access the sharing options.

Note



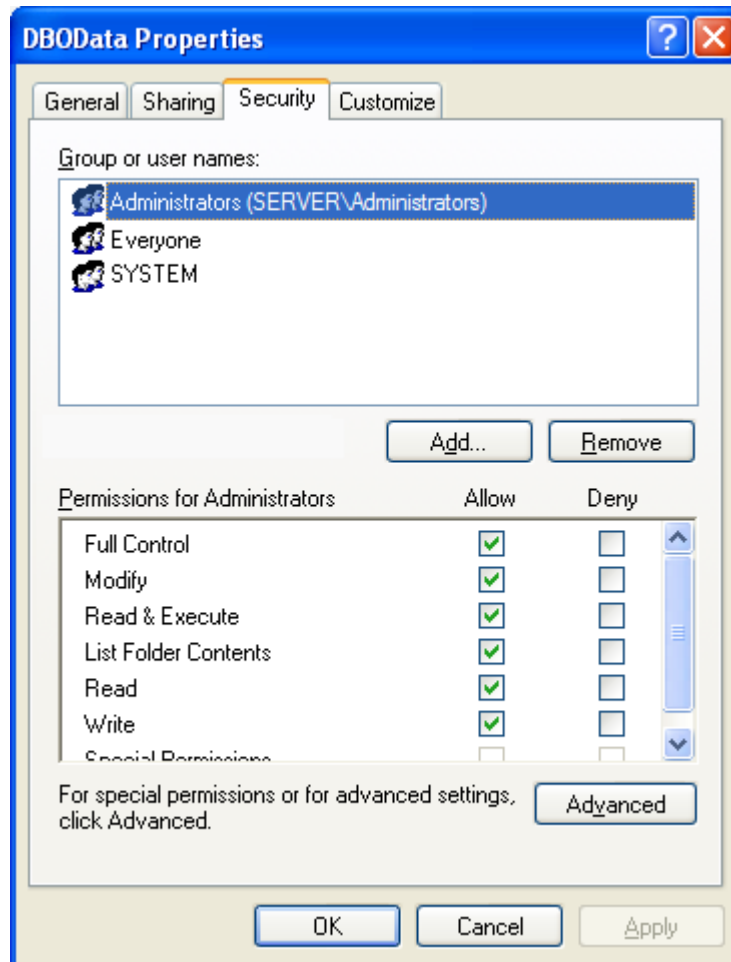
If you have never created a network share, this screen will have a link to a wizard where you can set up file sharing. Follow the on-screen instructions in the wizard, if desired.

- 6 Select the **Share this folder** check box or radio button (depending on your version of Windows). This option will make the \DBOData folder accessible to clients on the network.

WARNING!

If an outside user is able to access your network, any shared folders will be available. Make sure that you have security on your network to prevent outside access, especially if you are using a wireless network.


- 7 Select the **Security** tab:

**Note**

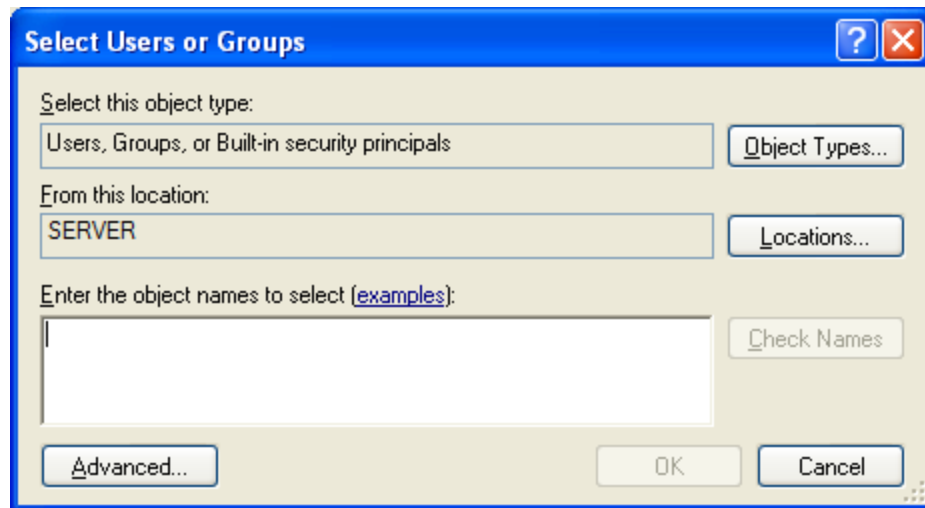
Depending on your version of Windows, you may need to click **Edit** to open a separate Permissions screen to change these settings.

- 8 Verify that there is a group named Everyone in the **Group or user names** list. If there is, skip to step 12.

WARNING!

 Selecting the Everyone group gives anyone who is able to access your network access to the folder. Configuring the Everyone group is the easiest way to ensure clients will be able to access the software when there is not a security scheme in place. If you have group security in place, it is recommended that you select groups and/or users that reflect your security configuration rather than using Everyone.

- 9 If there is no Everyone group, click [Add](#). The Select Users or Groups screen will open:



- 10 In the [Enter the object names to select](#) box, type *Everyone*.
- 11 Click [OK](#) to save the group and return to the [Security](#) tab.
- 12 Highlight the Everyone group in the [Group or User Names](#) list and select the [Full Control](#) check box in the [Permissions for Administrators](#) box.
- 13 Click [OK](#) to save the changes and close the Properties screen.

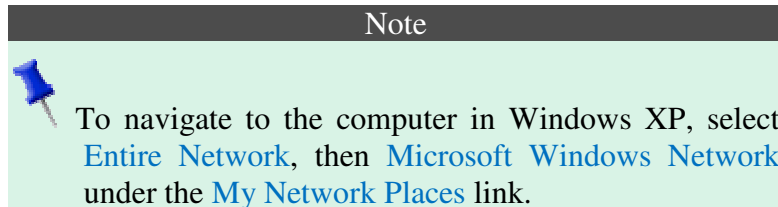
Testing the Folder Share

Once you've configured your share, it is recommended that you test it outside of Database Oasis by trying to access that folder in Windows Explorer from the client computer.

TO TEST THE PERMISSIONS:

- 1 On the client computer, right click on the Windows Taskbar's Start button and select [Explore](#) from the menu.

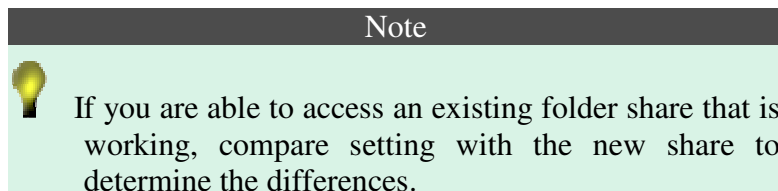
- 2 In the **Folders** list, select **Network** or **My Network Places** (depending on your version of Windows).
- 3 Navigate to your server computer and make sure you can see the Database Oasis data folder in the list.



- 4 Click on the Database Oasis data folder and make sure you can open it.
- 5 With the folder selected, right click in the files section on the right and select **New**, **Text Document** from the menu and verify it allows you to create a text file in the folder. (You may delete the text file if desired.)

If you are unable to access the folder and create a new file in the folder, clients will not be able to access the Database Oasis data. In this case, check the following:

- On the server computer, verify in Windows that the Guest account is turned on. (Refer to Microsoft Windows help for instructions on turning on the Guest account in your version of Windows.)
- Verify that the folder share has been correctly configured using the above instructions.



- Depending on the version of Windows and internal security settings, Windows may not allow you to grant full access to the default data path. In this case, you may need to move the \DBOData folder directly under the C:\ drive.